

YEAR 2018

COVERAGE (B) STATION 2201

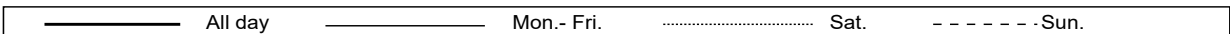
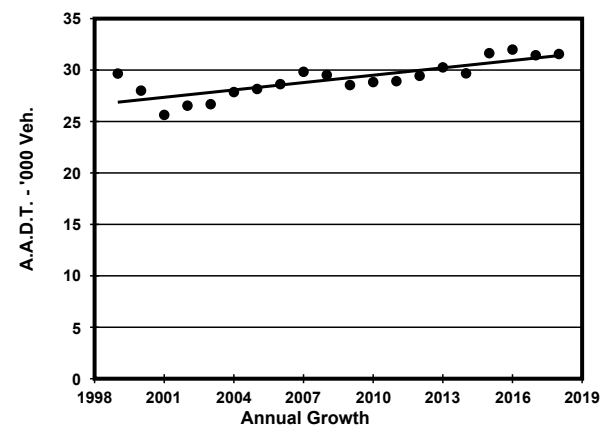
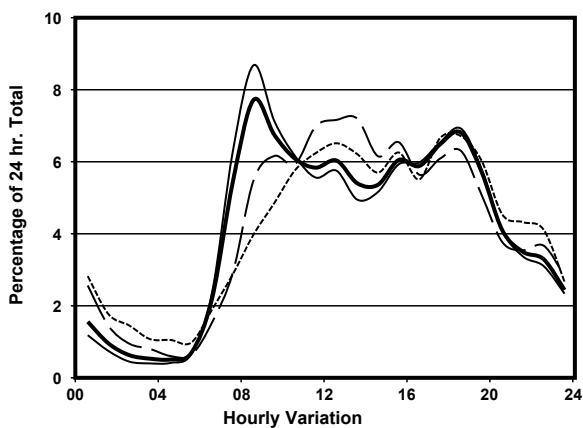
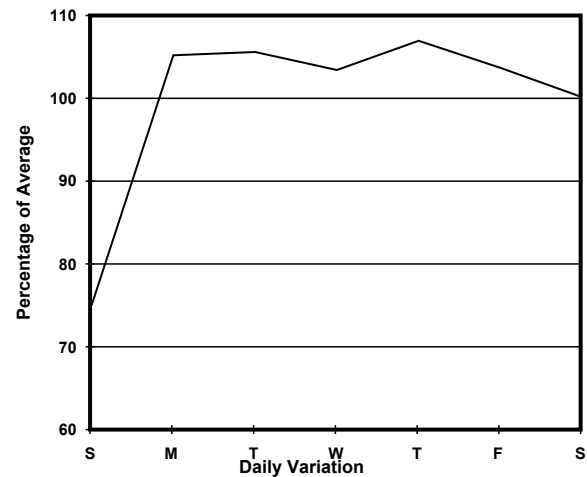
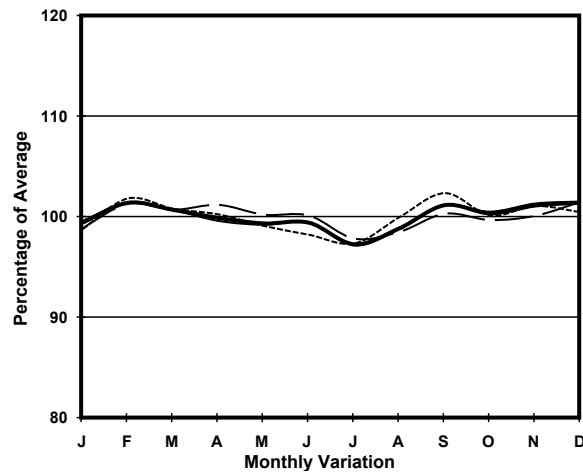
ROAD NETWORK MAJOR

ROAD TYPE PRIMARY DISTRIBUTOR

LINK POK FU LAM RD (from POKFIELD RD to MOUNT DAVIS RD)



1. TRAFFIC FLOW VARIATION AND GROWTH



2. TRAFFIC CHARACTERISTICS (BY DIRECTION)

Parameter	All - Day	Mon. - Fri.	Sat.	Sun.
SOUTH BOUND				
A.A.D.T.	11350	12000	11080	9430
R 12 / 24 - %	71.5	72.5	70.7	65.8
R 16 / 24 - %	90	90.9	88.5	86.1
AM Peak Hour	0800-0900	0800-0900	0900-1000	0900-1000
One-way flow at AM peak hour	760	870	710	440
T - % (AM)	-	12.8	-	-
PM Peak Hour	1800-1900	1800-1900	1600-1700	1700-1800
One-way flow at PM peak hour	710	790	550	580
T - % (PM)	-	6.9	-	-
Prop.of commercial vehicles - 16 hr.	-	9.3	-	-

NORTH BOUND				
A.A.D.T.	20210	21580	20970	14590
R 12 / 24 - %	75.2	76.5	73.6	68.2
R 16 / 24 - %	90.7	91.7	88.7	86.4
AM Peak Hour	0800-0900	0800-0900	0900-1000	0900-1000
One-way flow at AM peak hour	1680	2040	1270	730
T - % (AM)	-	5.2	-	-
PM Peak Hour	1800-1900	1800-1900	1800-1900	1800-1900
One-way flow at PM peak hour	1440	1530	1520	1040
T - % (PM)	-	6.4	-	-
Prop.of commercial vehicles - 16 hr.	-	6.8	-	-

3. OTHER INFORMATION AND COMMENT

Coverage (B) Station 2201
Year 2018

4. Vehicle classification and occupancy - Monday to Friday

Time		Class of vehicle									
		Motor Cycle	Private Car	Taxi	Private LB	PLB	Goods veh.		Non Fr. Bus	Fr. Bus	
							Light	M & H		SD	DD
0700-0800	Pro	1.7	34.6	34.1	5.0	8.7	5.0	0.5	4.2	0.0	6.2
	Ocp	1.0	1.6	2.2	7.6	12.8	1.5	1.5	17.2	0.0	48.5
0800-0900 Peak hour	Pro	1.8	52.1	25.1	1.9	6.4	5.3	0.7	2.7	0.0	4.0
	Ocp	1.2	1.4	2.1	4.2	15.0	1.7	1.4	16.2	0.0	59.1
0900-1000	Pro	1.0	46.7	32.6	1.4	4.0	8.8	0.8	0.8	0.0	4.0
	Ocp	1.0	1.5	2.1	4.1	13.6	1.7	2.0	6.0	0.0	40.9
1000-1100	Pro	2.2	34.3	34.5	1.1	7.1	13.6	1.1	0.9	0.0	5.2
	Ocp	1.2	1.5	2.1	2.2	12.2	1.7	2.2	14.5	0.0	32.0
1100-1200	Pro	1.0	29.8	33.7	2.9	7.2	16.6	1.7	1.9	0.0	5.2
	Ocp	1.0	1.4	2.1	3.3	11.6	1.6	1.9	13.5	0.0	29.8
1200-1300	Pro	2.0	41.8	25.0	4.0	4.9	11.3	1.5	4.4	0.1	5.0
	Ocp	1.1	1.4	2.3	3.3	12.5	1.5	2.0	14.5	1.0	36.7
1300-1400	Pro	1.2	28.5	34.6	1.2	8.5	16.4	0.9	3.3	0.0	5.3
	Ocp	1.2	1.5	2.1	2.2	9.9	1.6	2.0	5.9	0.0	29.3
1400-1500	Pro	2.7	31.8	35.8	1.3	6.1	15.9	0.6	1.0	0.0	4.8
	Ocp	1.2	1.6	2.0	5.3	12.2	1.7	1.3	12.4	0.0	22.8
1500-1600	Pro	1.4	34.5	29.1	3.4	7.3	16.8	0.4	2.4	0.0	4.7
	Ocp	1.3	1.6	2.2	4.7	10.7	1.7	2.0	23.3	0.0	27.8
1600-1700	Pro	2.6	38.8	26.7	2.2	7.9	13.0	0.7	3.3	0.0	4.8
	Ocp	1.0	1.6	2.1	3.7	11.8	1.8	1.5	17.9	0.0	31.0
1700-1800	Pro	4.0	41.9	28.8	1.1	6.4	9.8	1.3	2.0	0.0	4.7
	Ocp	1.0	1.5	2.3	2.5	13.2	1.8	1.9	10.5	0.0	49.1
1800-1900	Pro	1.8	52.5	26.2	0.5	7.0	5.5	0.3	1.3	0.0	4.8
	Ocp	1.1	1.4	2.1	3.7	13.9	1.5	1.5	19.4	0.0	56.4
1900-2000	Pro	1.9	46.7	36.8	0.7	5.6	2.6	0.2	0.6	0.0	4.9
	Ocp	1.0	1.4	2.0	4.0	13.2	2.1	1.0	23.3	0.0	37.5
2000-2100	Pro	1.4	36.6	45.5	0.3	7.5	1.4	0.0	0.8	0.0	6.5
	Ocp	1.2	1.4	1.7	2.0	9.0	1.6	0.0	2.0	0.0	19.0
2100-2200	Pro	2.8	33.0	47.5	0.3	8.3	1.0	0.3	0.0	0.0	6.7
	Ocp	1.1	1.6	1.7	2.0	10.4	1.3	2.0	0.0	0.0	23.0
2200-2300	Pro	3.2	35.4	45.3	0.0	8.7	0.8	0.0	0.0	0.0	6.7
	Ocp	1.0	1.5	1.6	0.0	6.9	1.0	0.0	0.0	0.0	24.1
16 hours	Pro	2.0	40.1	32.5	1.7	6.8	9.3	0.7	1.9	0.1	5.0
	Ocp	1.1	1.5	2.1	4.3	12.0	1.7	1.8	14.8	1.0	36.7

Legend

Pro. Proportion of vehicles in % (Sum may not add up to 100% due to figure rounding)*

Ocp. Average occupancy of vehicles including both driver and passengers*

M&H Medium and Heavy

***** All traffic data are collected from combined bounds except for one way traffic